

Notes: Unit A

Roof / Ceiling:

Insulation: Fletcher R5.0 ceiling batts or equivalent.
 Sarking: Bradford Enviroseal Proctor Wrap HTS-IT.
 Support Mesh.
 Drainage Battens: Vent System 20mmx45mm.
 Profiled colorbond sheet cladding.
 Gutter: Stainless Steel. 2x rainheads and overflow.

Walls:

Insulation: Fletcher HD R2.5 batts or equivalent.
 Wall sarking: Bradford Enviroseal Proctorwrap.
 Profiled colorbond sheet cladding on metal battens.

Floor:

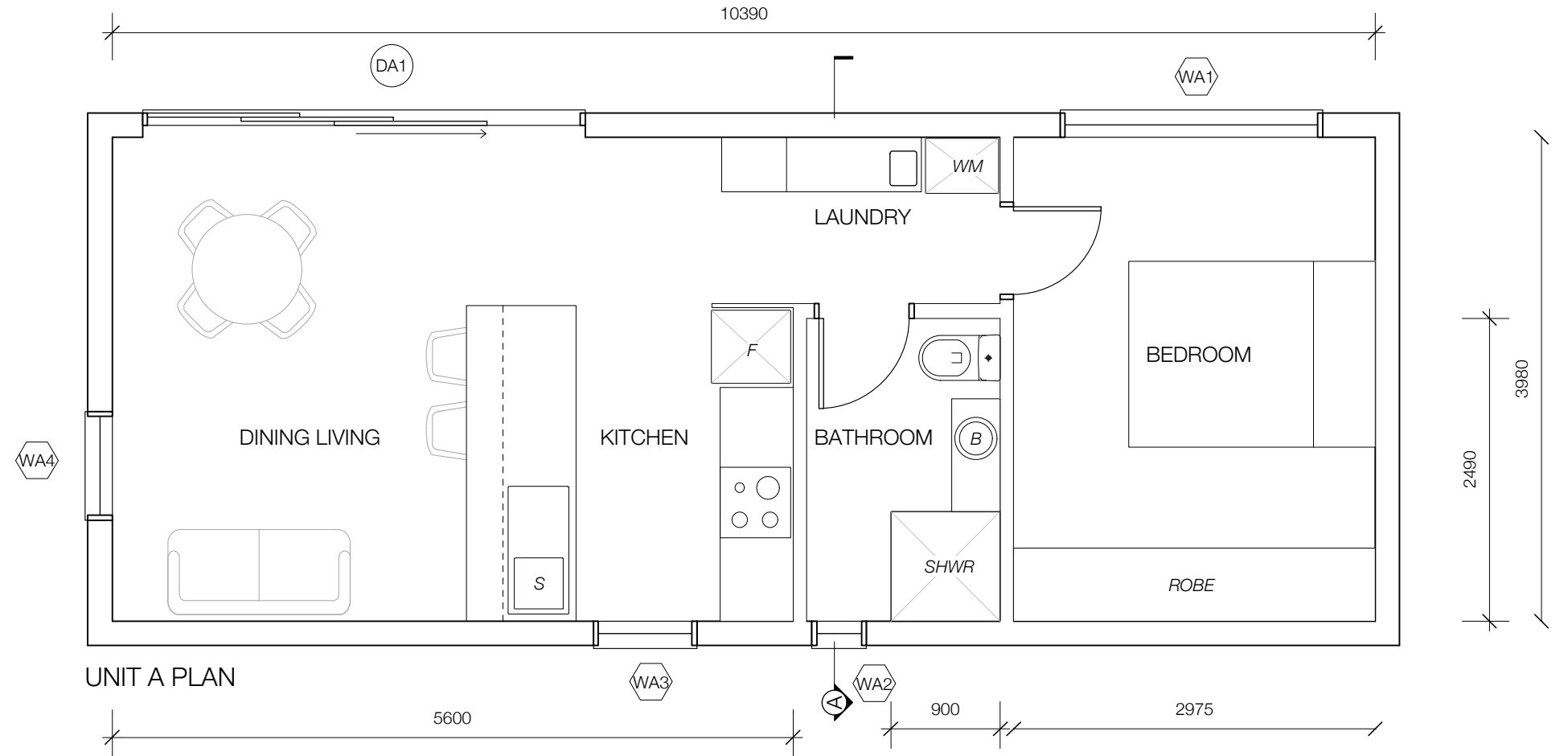
Insulation R2.0 batts.
 Colorbond sheet support

Hotwater:

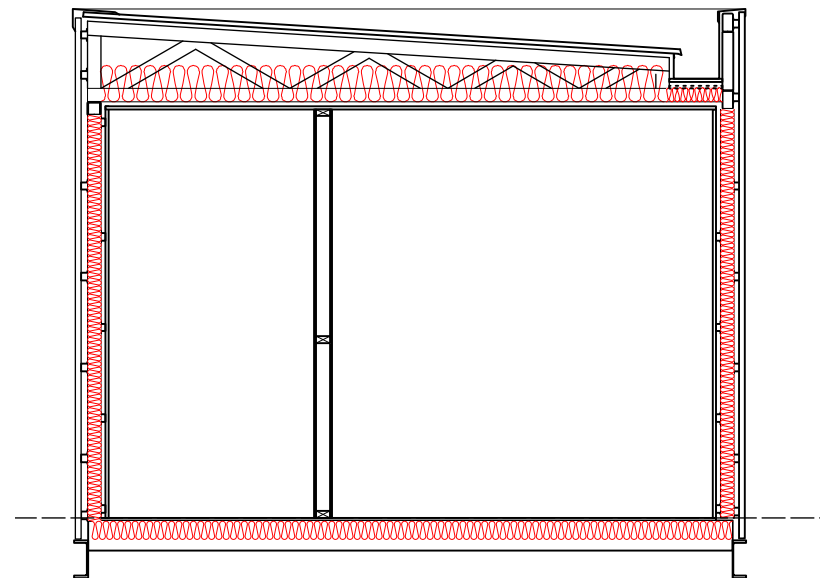
Thermann instant gas.

Glazing Schedule:

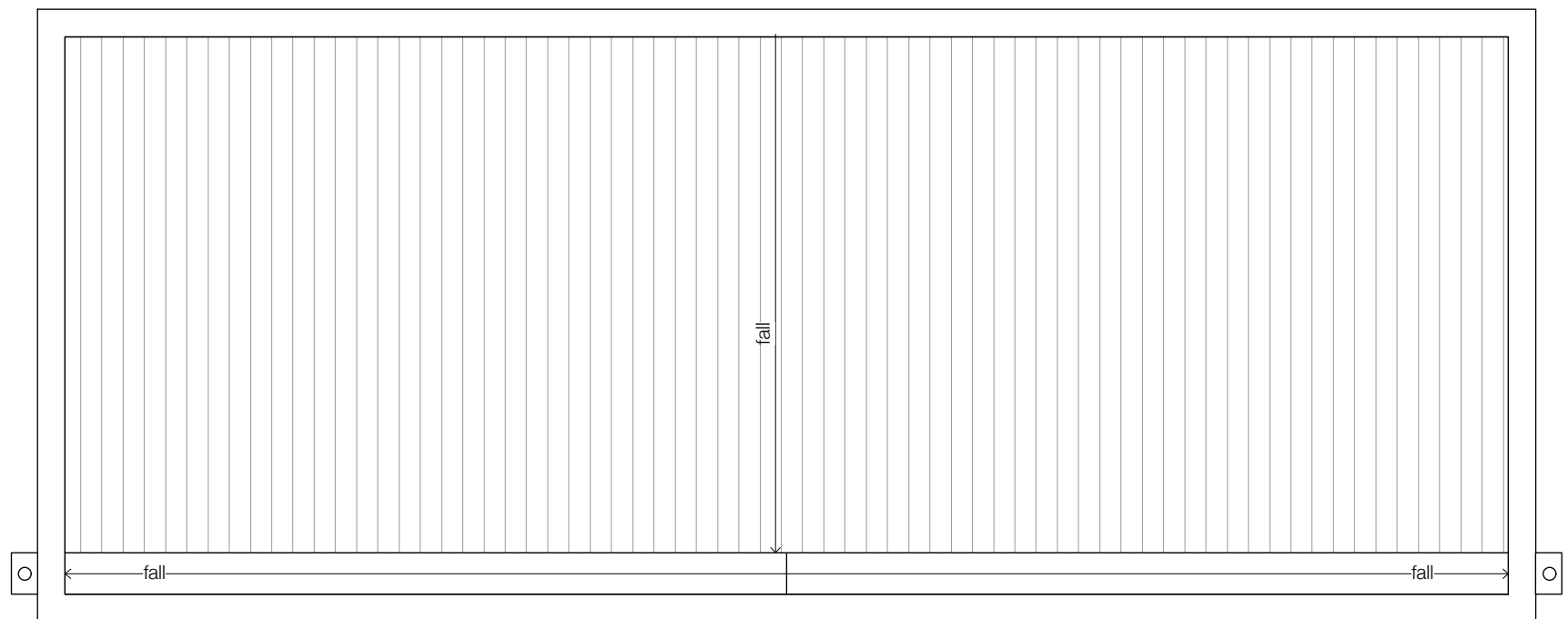
DA1. Double glazed aluminium sliding door.	3640w X 2400h
WA1. Double glazed aluminium awning / fixed window.	2160w X 1400h
WA2. Double glazed aluminium awning window.	460w X 1400h
WA3. Double glazed aluminium awning window.	850w X 1400h
WA4. Double glazed aluminium fixed window.	900w X 2040h



UNIT A PLAN

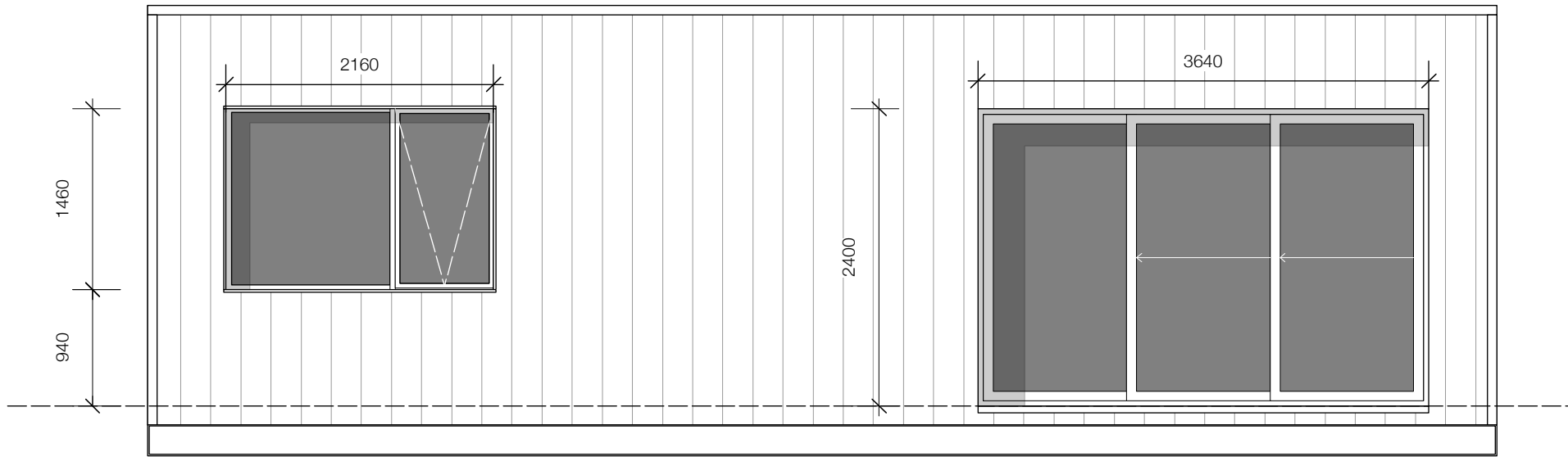


UNIT A SECTION

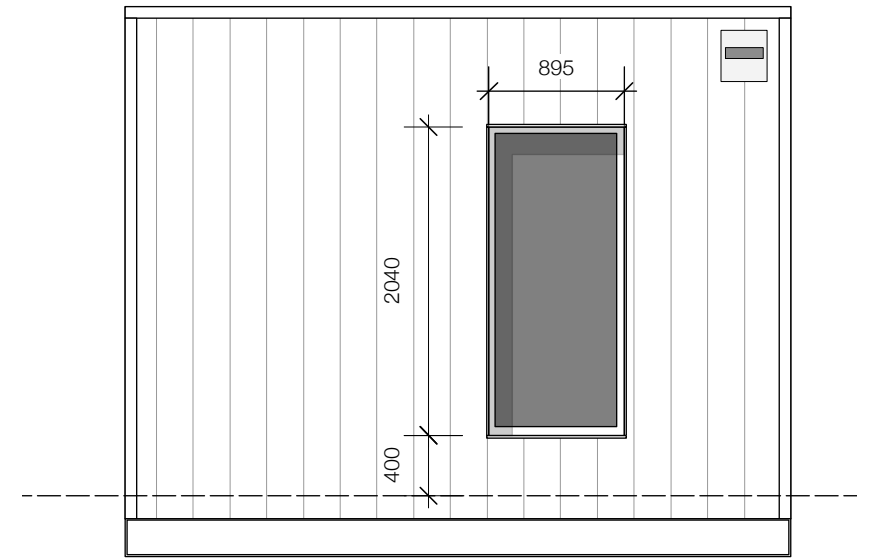


UNIT A ROOF PLAN

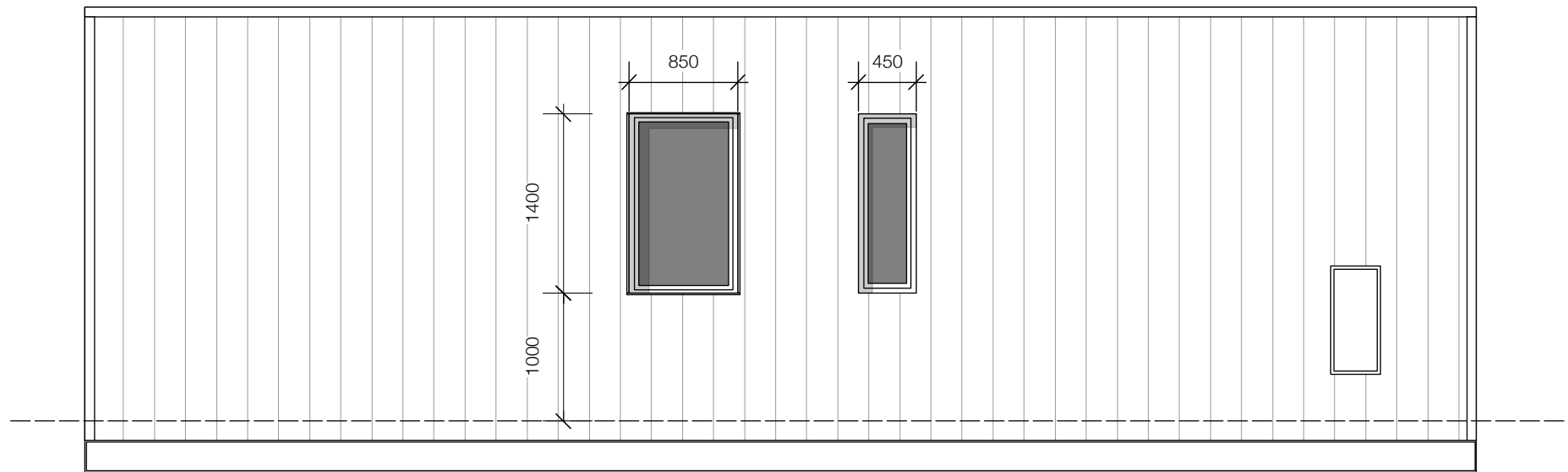
<p>gary fleming <small>b. env. des. b. arch</small></p> <p>0417175151 gfleming1963@icloud.com Acc: CC 5359 H</p>	<p>Drawn: GF</p>	<p>Checked: GF</p>	<p>Date: MAR. 2023</p>	<p>Issue No. Issued for Compliance</p>	
	<p>Project No. 2307</p>		<p>Transportable Homes Tom Bertram</p>		
	Revision	Notes	Date		



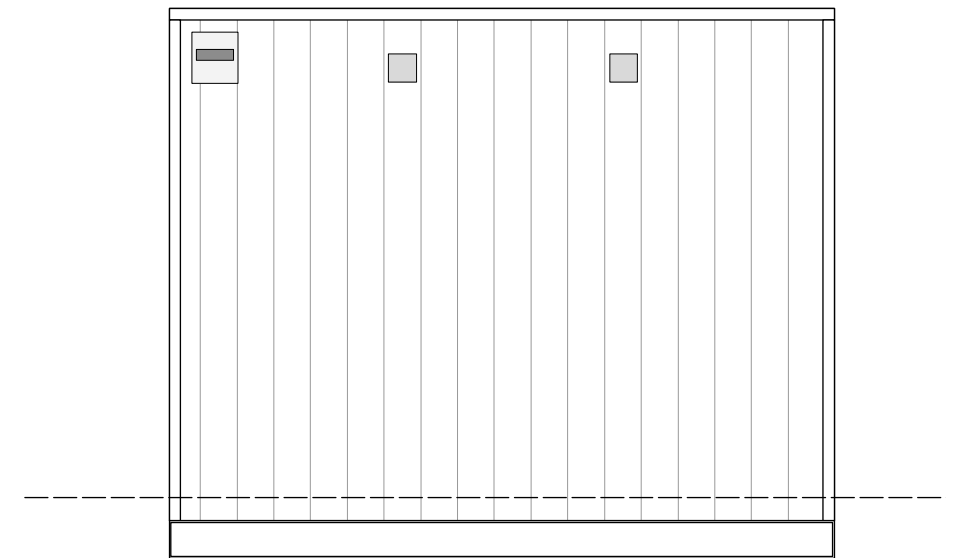
UNIT A ELEVATION 1



UNIT A ELEVATION 2



UNIT A ELEVATION 3



UNIT A ELEVATION 4

<p style="text-align: center;">gary fleming <small>b. env. des. b. arch</small></p> <p style="text-align: center;">0417175151 gfleming1963@icloud.com Acc: CC 5359 H</p>	<p>Drawn: GF</p>	<p>Checked:</p>	<p>Date: MAR. 2023</p>	<p>Issue No. Issued for Compliance</p>	<p>Revision</p>	<p>Notes</p>	<p>Date</p>
	<p>Project No. 2307</p> <p>Transportable Homes Tom Bertram</p>						

