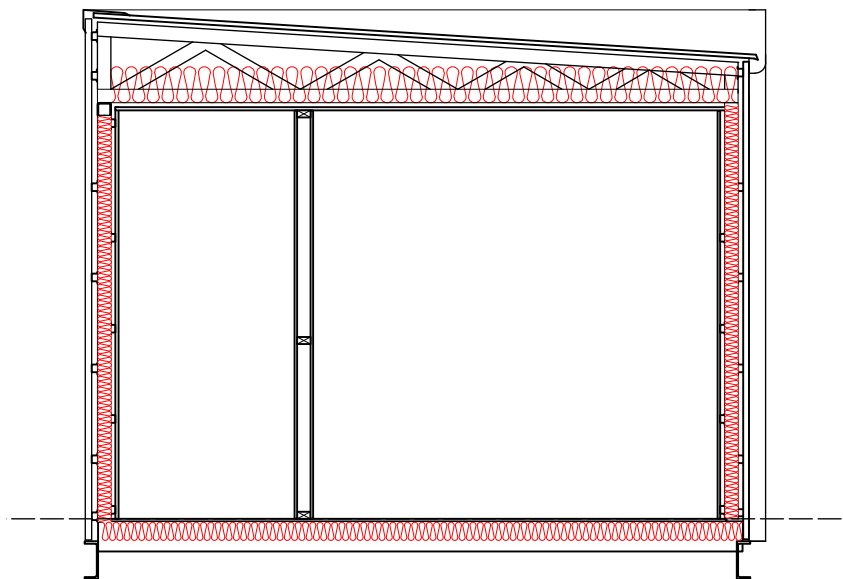
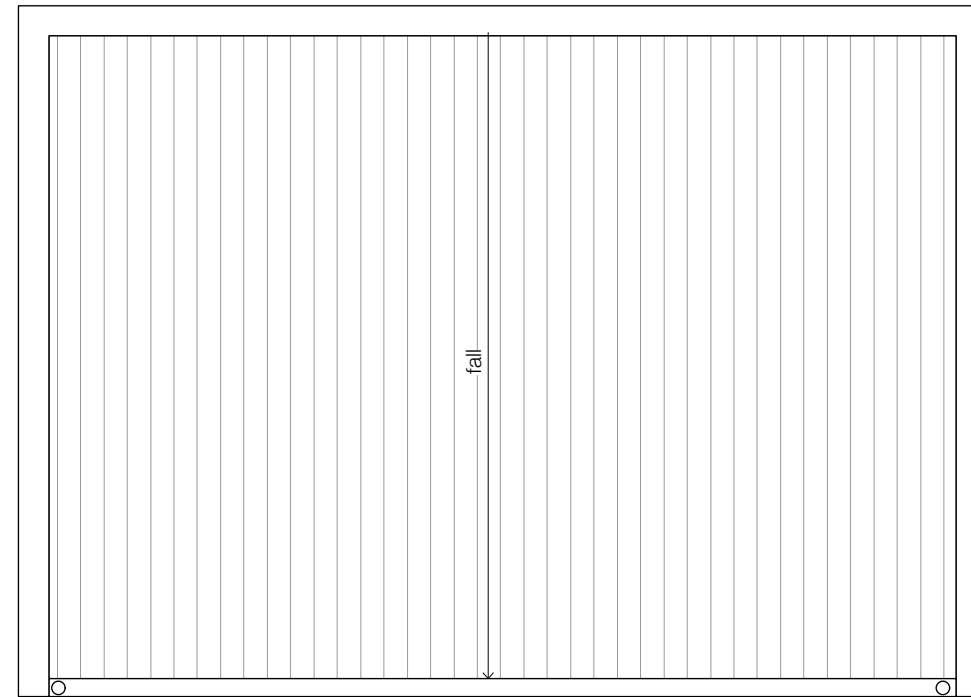


UNIT B PLAN



UNIT B SECTION



UNIT B ROOF PLAN

Notes: Unit B

Roof / Ceiling:

Insulation: Fletcher R5.0 ceiling batts or equivalent.
 Sarking: Bradford Enviroseal Proctor Wrap HTS-IT.
 Support Mesh.
 Drainage Battens: Vent System 20mmx45mm.
 Profiled colorbond sheet cladding.
 Gutter: Colorbond eave. 2x downpipes.

Walls:

Insulation: Fletcher HD R2.5 batts or equivalent.
 Wall sarking: Bradford Enviroseal Proctorwrap.
 Profiled colorbond sheet cladding on metal battens.

Floor:

Insulation R2.0 batts.
 Colorbond sheet support.

Hotwater:

Thermann instant gas.

Glazing Schedule:

DB1. Double glazed aluminium sliding door. 1800w X 2250h
 WB1. Double glazed aluminium awning. 600w X 1000h
 WB2. Double glazed aluminium awning window. 700w X 1400h
 WB3. Double glazed aluminium fixed window. 900w X 1200h

gary
fleming
b.env.des. b.arch

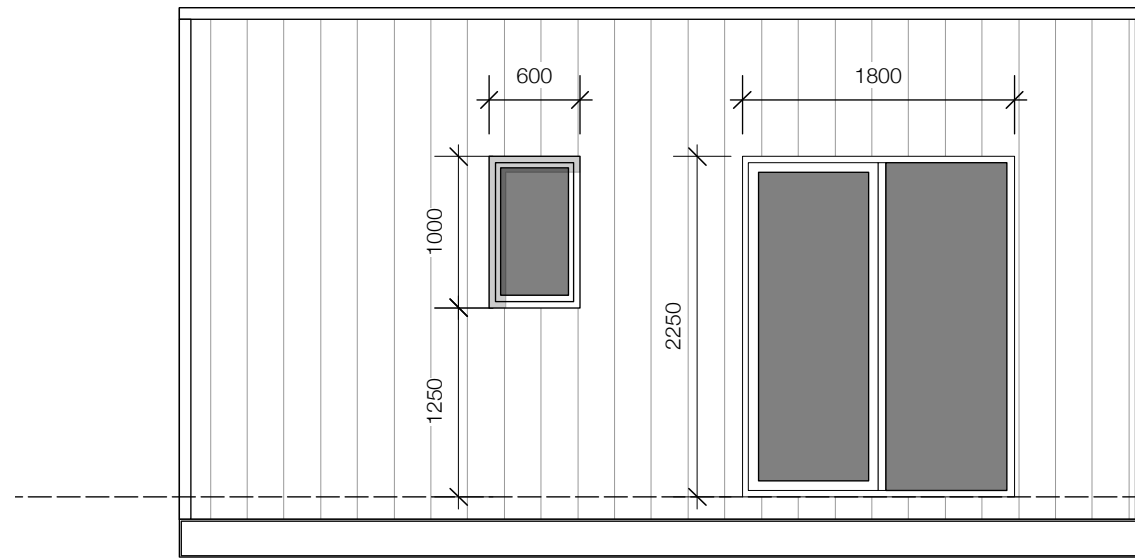
0417175151
gfleming1963@icloud.com
Acc: CC 5359 H

Drawn: GF
 Checked: GF
 Date: **MAR. 2023**
 Issue No. Issued for Compliance

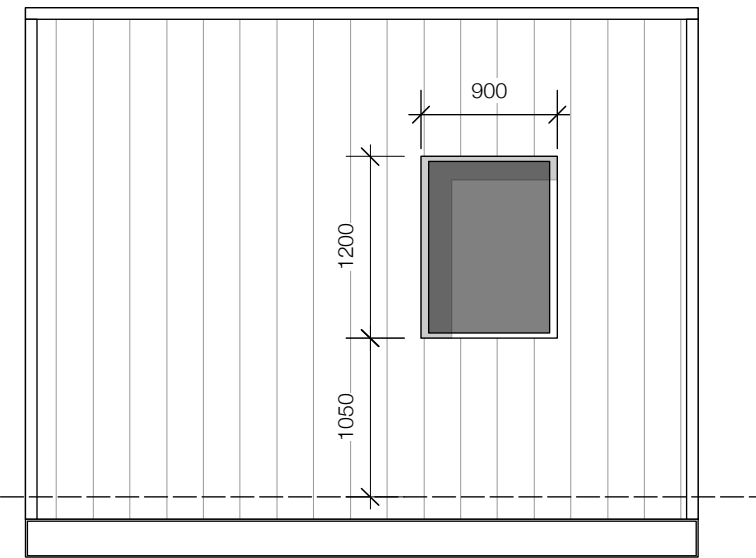
Project No. 2307
 Transportable Homes
 Tom Bertram

Revision	Notes	Date

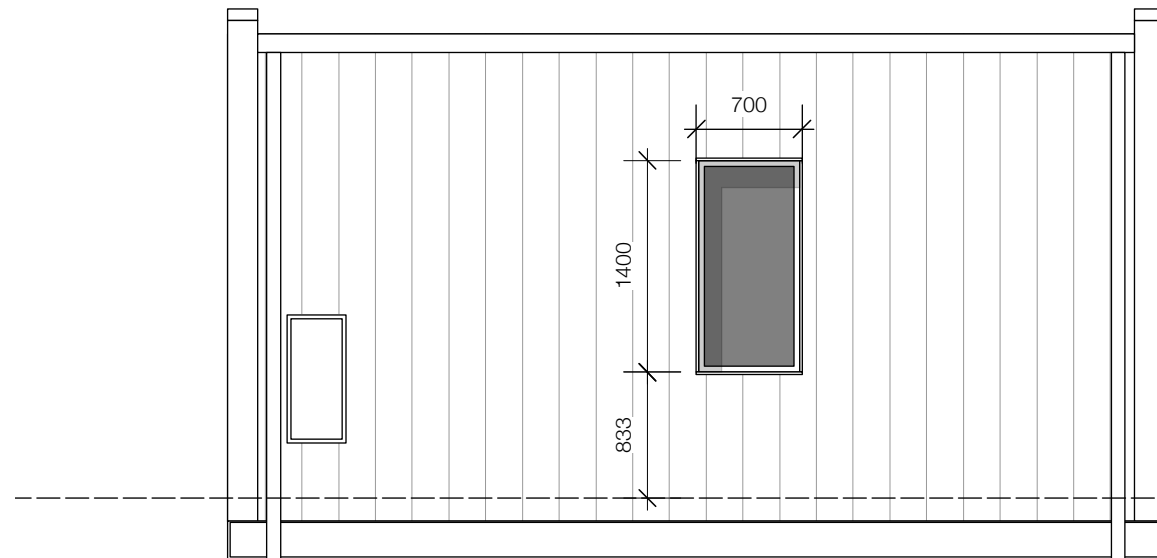
not so tiny
modern transportable living



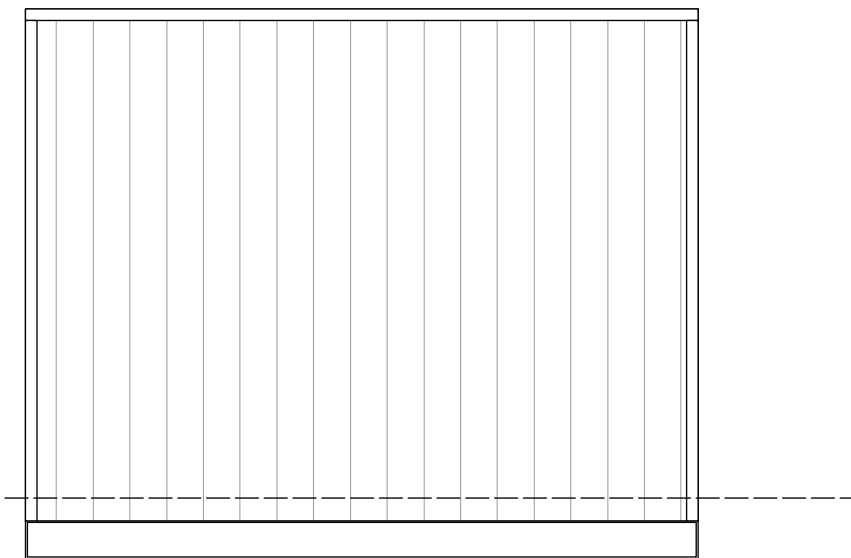
UNIT B ELEVATION 1



UNIT B ELEVATION 2



UNIT B ELEVATION 3



UNIT B ELEVATION 4

<p>gary fleming b.env.des. b.arch</p> <p>0417175151 gfleming1963@icloud.com Acc: CC 5359 H</p>	<p>Drawn: GF</p>	<p>Checked:</p>	<p>Date: MAR. 2023</p>	<p>Issue No. Issued for Compliance</p>	<p>Revision</p>	<p>Notes</p>	<p>Date</p>
	<p>Project No. 2307</p> <p>Transportable Homes Tom Bertram</p>						